

TRUCK COWL & RAM AIR STYLE HOODS

TRUCK HOODS



COWL INDUCTION Style  
**Part # 0849-034**

CHEVY PU: 67-68



COWL INDUCTION Style  
**Part # 0849-035**

CHEVY PU: 69-72



COWL INDUCTION Style  
**Part # 0850-035**

CHEVY PU/GMC PU: 73-80  
CHEVY BLAZER/SUBURBAN: 73-80



COWL INDUCTION Style  
**Part # 0851-035**


CHEVY PU/GMC PU: 81-87  
CHEVY BLAZER/SUBURBAN: 81-91



COWL INDUCTION Style  
**Part # 0852-035**

**1st Design**

CHEVY PU/GMC PU: 88-98, 99-02 CK Series,  
SUBURBAN/TAHOE/BLAZER/YUKON 92-99



COWL INDUCTION Style  
**Part # 0852-036**

**2nd Design**

CHEVY PU/GMC PU: 88-98, 99-02 CK Series,  
SUBURBAN/TAHOE/BLAZER/YUKON 92-99



RAM AIR Style  
**Part # 0852-037**

CHEVY PU/GMC PU: 88-98, 99-02 CK Series,  
SUBURBAN/TAHOE/BLAZER/YUKON 92-99

**These Hoods are made from top quality steel which meets or exceeds the original OEM standards.**

---

**The Hoods are handled & shipped carefully with protective foam inserts in thick-wall boxes.**



COWL INDUCTION Style  
**Part # 0856-035**

CHEVY SILVERADO: 99-02 (fits 99-00 HD)  
TAHOE/SUBURBAN: 00-06 (except 01-02 HD)

RAM AIR Style  
**Part # 0856-039**

CHEVY SILVERADO: 99-02 (fits 99-00 HD)  
TAHOE/SUBURBAN: 00-06 (except 01-02 HD)

## TRUCK COWL & RAM AIR STYLE HOODS

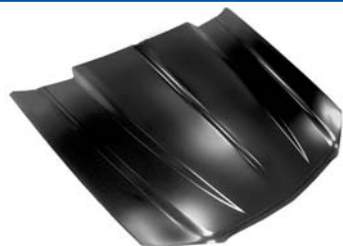


COWL INDUCTION Style  
Part # **0856-036**

GMC SIERRA: 99-06 (fits HD)  
GMC YUKON/YUKON XL: 00-06

**These Hoods are designed to provide sharp eye-catching body lines, curves, and contours.**

**The Hoods are produced under the rigid guidelines of ISO 9001 international standards.**

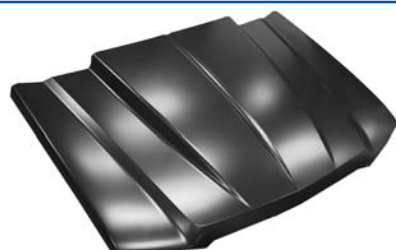


COWL INDUCTION Style  
Part # **0856-037**

CHEVY AVALANCHE: 02-06 (with body side cladding)

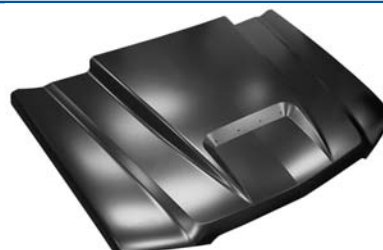
RAM AIR Style  
Part # **0856-042**

CHEVY AVALANCHE: 02-06 (with body side cladding)



COWL INDUCTION Style  
Part # **0856-038**

CHEVY SILVERADO: 03-06 (except 05-06 1500 HD, 2500, 3500)  
CHEVY AVALANCHE: 02-06 (without body side cladding)



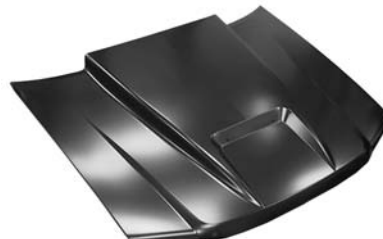
RAM AIR Style  
Part # **0856-043**

CHEVY SILVERADO: 03-06 (except 05-06 1500 HD, 2500, 3500)  
CHEVY AVALANCHE: 02-06 (without body side cladding)



COWL INDUCTION Style  
Part # **0856-040**

CHEVY COLORADO/GMC CANYON: 04-06



RAM AIR Style  
Part # **0856-041**

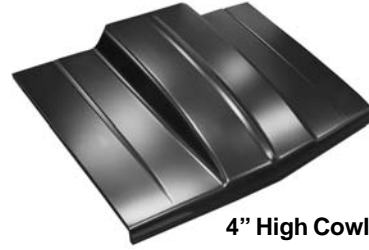
CHEVY COLORADO/GMC CANYON: 04-06

## TRUCK COWL & RAM AIR STYLE HOODS



COWL INDUCTION Style  
**Part # 0870-035**

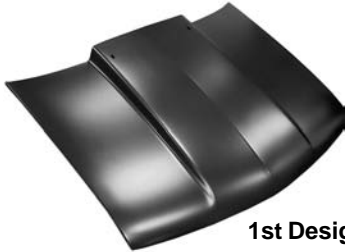
CHEVY S-10/GMC S-15: 82-93  
CHEVY BLAZER/GMC JIMMY: 83-94



COWL INDUCTION Style  
**Part # 0870-037**

**4" High Cowl**

CHEVY S-10/GMC S-15: 82-93  
CHEVY BLAZER/GMC JIMMY: 83-94



COWL INDUCTION Style  
**Part # 0872-035**

**1st Design**

CHEVY S-10/GMC S-15: 94-03  
CHEVY BLAZER/GMC JIMMY: 95-05



COWL INDUCTION Style  
**Part # 0872-036**

**2nd Design**

CHEVY S-10/GMC S-15: 94-03  
CHEVY BLAZER/GMC JIMMY: 95-05

COWL INDUCTION Style  
**Part # 0872-037**

**4" High Cowl**

CHEVY S-10/GMC S-15: 94-03  
CHEVY BLAZER/GMC JIMMY: 95-05

**The Hoods are precisely engineered  
and manufactured for fit quality  
and ease of installation.**

**These Hoods are double-powder  
coated with a high-quality  
electrocoat black primer.**

## FORD TRUCK HOOD



RAM AIR Style  
**Part # 1982-036**

FORD PU: 97-99, F150: 97-04  
FORD EXPEDITION: 97-02